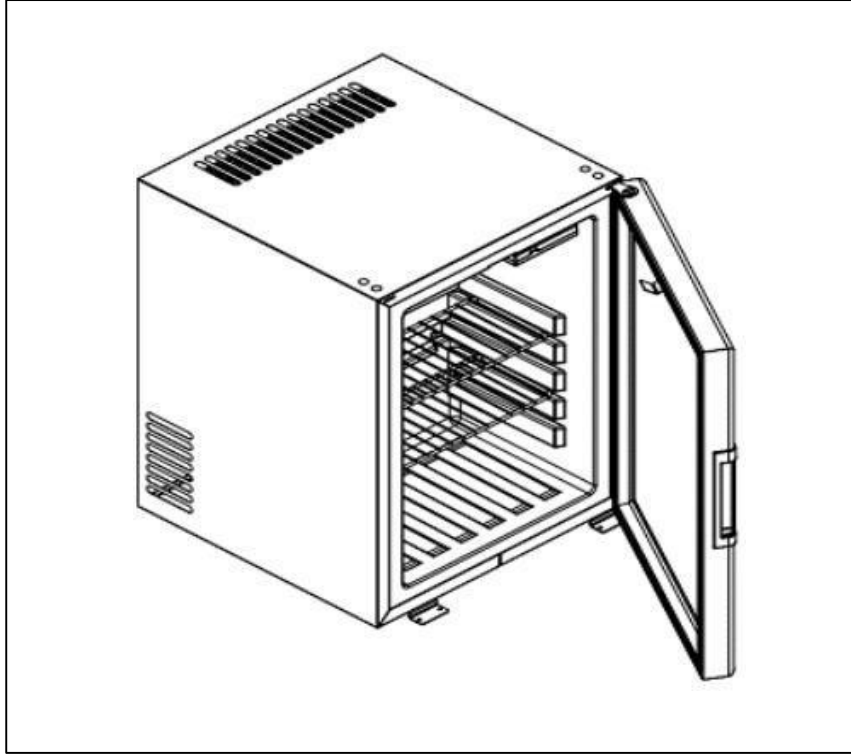




Bädd & Bad AB
Grustagsgatan 22
254 64 Helsingborg, Sweden
Tel. +46 42 26 66 60

Revizyon no / Revision no : 03
Revizyon tarihi / Revision date : 30.01.2024
Model: SM 271-THG MINIBAR

TECHNICAL SPECIFICATIONS



MODEL: 81914459

CHARACTERISTICS

➤ Compartment Type	: Cellar
➤ Energy Efficient Class	: G
➤ Climate Class	: N
➤ Energy Consump.	:175 kWh/a
➤ Energy Efficiency Index	:223 %
➤ Power	:50 W
➤ /Voltage / Freq.	: 110 V - 240 V / 50-60 Hz.
➤ Defrosting Type	: Automatic
➤ Noise Emission	: 23 (dB(A) re 1 pW)

ACCESSORIES

➤ Internal Light	: Standart
➤ KaLockable Door	: Optional
➤ Door Hinge Side	: Right
➤ Reversible Door	: Yes
➤ Thermostat Control	: Electronic

TECHNICAL SPECIFICATIONS

➤ External Dims.	: 512x384x395 mm (HxWxD)
➤ Internal Dims.	: 468x351x186 mm (HxWxD)
➤ Pack. Dims.	: 559x432x464 (HxWxD)
➤ Pack. Volume	: 0,11 m ³
➤ Gross Volume	: 30 lt
➤ Total Volume	: 27 lt
➤ Gross Weight	: (12,77±1) kg
➤ Net Weight	: (11,6±1) kg
➤ Outer Body	: 0.4 mm.PVC Kaplı Sac / 0,4 PVC Cooted Sheet
➤ Inner Liner	: Hips
➤ Insulation Material	: Sert P.U. / Rigid P.U.
➤ Blowing Agent	: C.Pentane
➤ Insulation Density	: 38~40 kg/m ³

This document is property of ISM A.Ş. can not be copied, distributed or disclosed to third parties without authorization.



ISM

Makine Elektrik San. Ve Tic. Aş.
Organize Sanayi Bölgesi No:2 45050
MANİSA Tlf:(236)2334233

Revizyon no / Revision no : 03
Revizyon tarihi / Revision date : 30.01.2024
Model: SM 271-THG MINIBAR

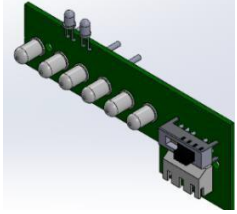
COMPONENT DETAILS



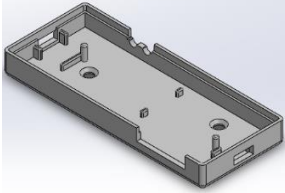
YA0102702-02 1 Adt/1 pcs
Door Gr



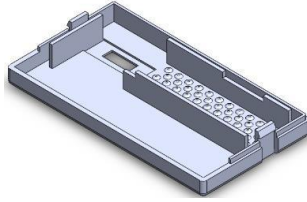
HM03-0110364 1 adt/1 pcs.
Gasket



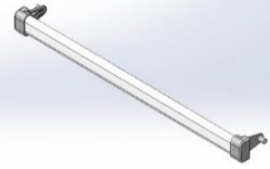
HM03-0030310 1 adt/ 1 pcs
Lamp Cart Platin



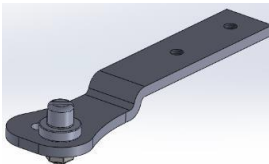
HM15-0300073 1 adt/1 pcs
Lamp Bottom Cover



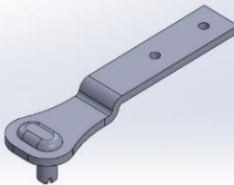
HM15-0300014 1 adt/1 pcs
Lamp Upper Cover



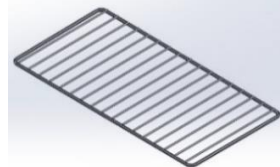
ST0053 2 adt/2 pcs
Shelve of Door



FS03-0090054 1 adt/1 pcs
Lower Hinge Gr



FS03-0090044 1 adt/1 pcs
Upper Hinge Gr



HM03-0040001 2 adt/2 pcs.
Shelve of Body

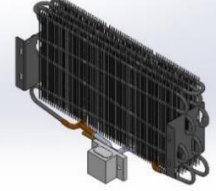


ISM

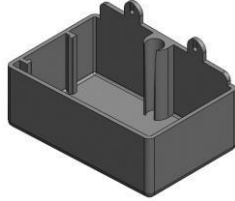
Makine Elektrik San. Ve Tic. Aş.
Organize Sanayi Bölgesi No:2 45050
MANİSA Tif:(236)2334233

Revizyon no / Revision no : 03
Revizyon tarihi / Revision date : 30.01.2024
Model: SM 271-THG MINIBAR

COMPONENT DETAILS



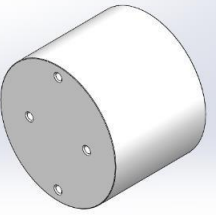
YM14-0020105 1 Adt/11 pcs
Condanser



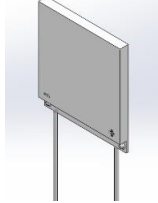
HM15-0300061 1 Adt/1 pcs
Drain Pan



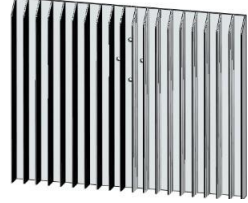
FS06-0010003 0,19 mt
Drean Horse



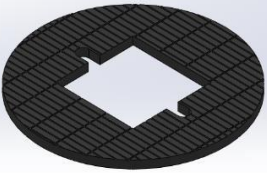
FS03-0090032 1 adt/1 pcs
Al. Wedge



FS04-0090001 1 adt/1pcs
Peltier Module



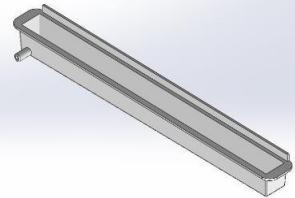
FS03-0080019 0,1 By
Al. Evap



HM03-0020005 1 adt/1pcs
HEATPIPE NEOPREN



HM03-0020002 1 adt/1pcs
Inner Izolation



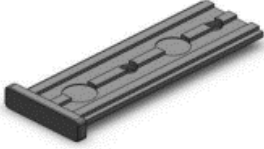
HM15-0300069 1 adt/1
Drainage Intake Plastic



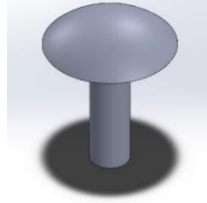
ISM
Makine Elektrik San. Ve Tic. Aş.
Organize Sanayi Bölgesi No:2 45050
MANİSA Tlf:(236)2334233

Revizyon no / Revision no : 03
Revizyon tarihi / Revision date : 30.01.2024
Model: SM 271-THG MINIBAR

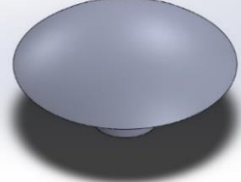
COMPONENT DETAILS



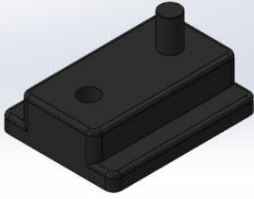
HM15-0300037 1 adt/1 pcs
Hinge Slide



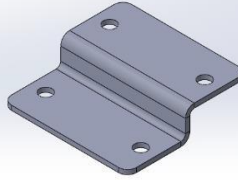
HM15-0400021 2 adt/2 pcs. Plastic
Pin



HM15-0400018 2 adt/2 pcs. M26/
Plastic Pin



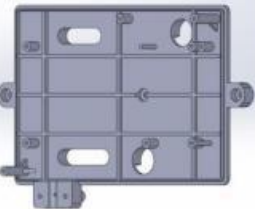
HM15-0300041 4 adt/4 pcs.
Foot



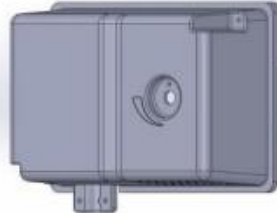
HM15-0300034 2 adt/2 pcs.
Furniture Connection Plate



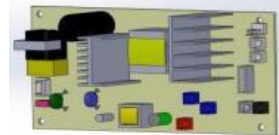
HM14-0020122 1 adt/ 1 pcs
Power Cable



HM15-0300104 1 adt/1 pcs
UL Thermostat Bottom Case



HM15-0300105 1 adt/1 pcs UL UL
Thermostat Upper Case



HM03-0030308 1 adt / 1 pcs.
Main Board



ISM

Makine Elektrik San. Ve Tic. Aş.
Organize Sanayi Bölgesi No:2 45050
MANİSA Tlf:(236)2334233

Revizyon no / Revision no : 03
Revizyon tarihi / Revision date : 30.01.2024
Model: SM 271-THG MINIBAR

WIRING DIAGRAM

ELECTRICAL CIRCUIT DIAGRAM OF PELTIER MINIBAR

